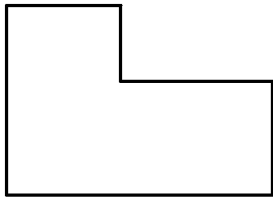




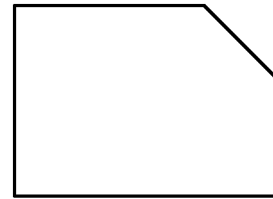
Bemaßen Sie die benannten Elemente:

(Maßstab 1:1)

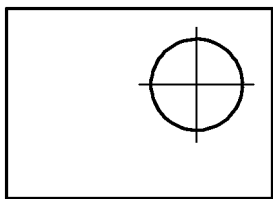
Ausklinkung



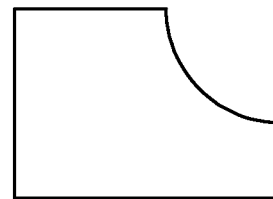
Fase



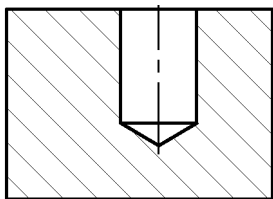
Durchgangsbohrung (\emptyset)



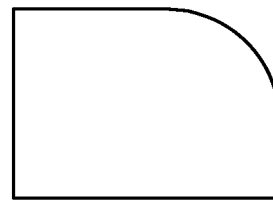
Hohlkehle oder Radius



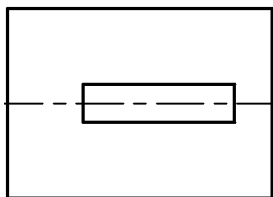
Grundloch (\emptyset)



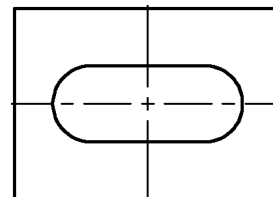
Abrundung oder Radius



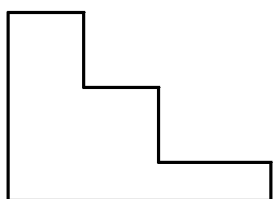
Durchbruch



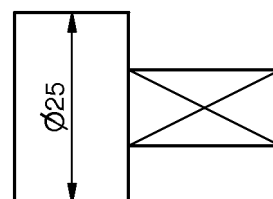
Langloch



Abstufungen



Vierkant

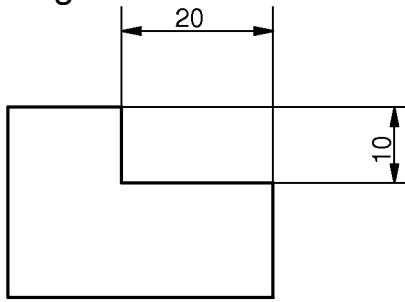




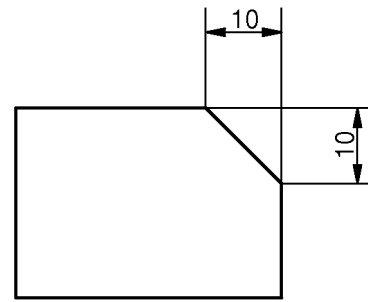
Lösungsvorschläge:

(Maßstab 1:1)

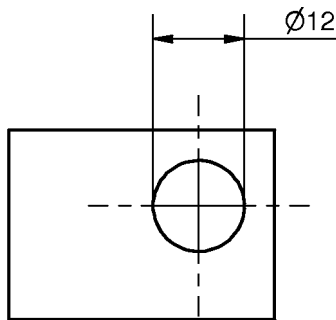
Ausklinkung



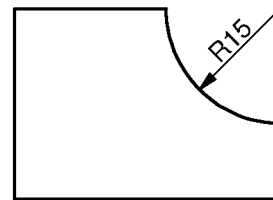
Fase



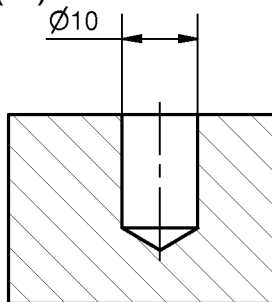
Durchgangsbohrung (\emptyset)



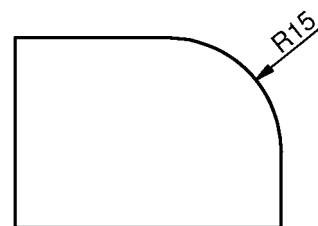
Hohlkehle oder Radius



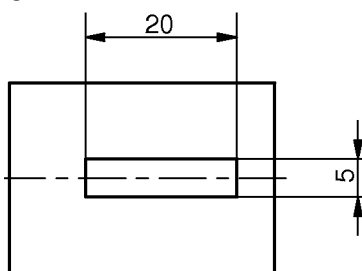
Grundloch (\emptyset)



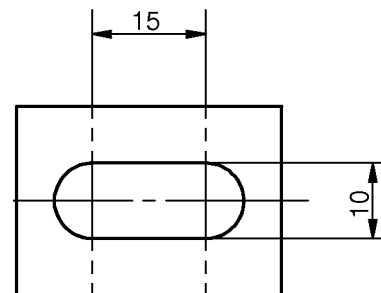
Abrundung oder Radius



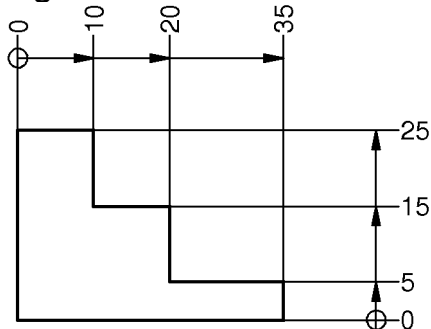
Durchbruch



Langloch



Abstufungen



Vierkant

